

Installing and configuring Mobile@Connector Adapter for SAP

Communication between Mobile@Connector and SAP Business One requires installation of Mobile@Connector Adapter for SAP. Necessary steps are described below.

Step 1 –Hardware configuration

Adapter software should be installed on computer with MS Windows and Internet Information Server. Webpages published on this computer have to be visible from the Internet (computer must have IP address visible from Internet)

Step 2 – Software installation

SDK DI API from SAP installation package have to installed. After installing API, adapter installation should be started - run setup.exe file. Adapter installation software asks user to enter virtual directory name (default is „RemoteSapAdapter” – fig.1). If default directory name will be changed, new name have to be entered in Step 4 too.

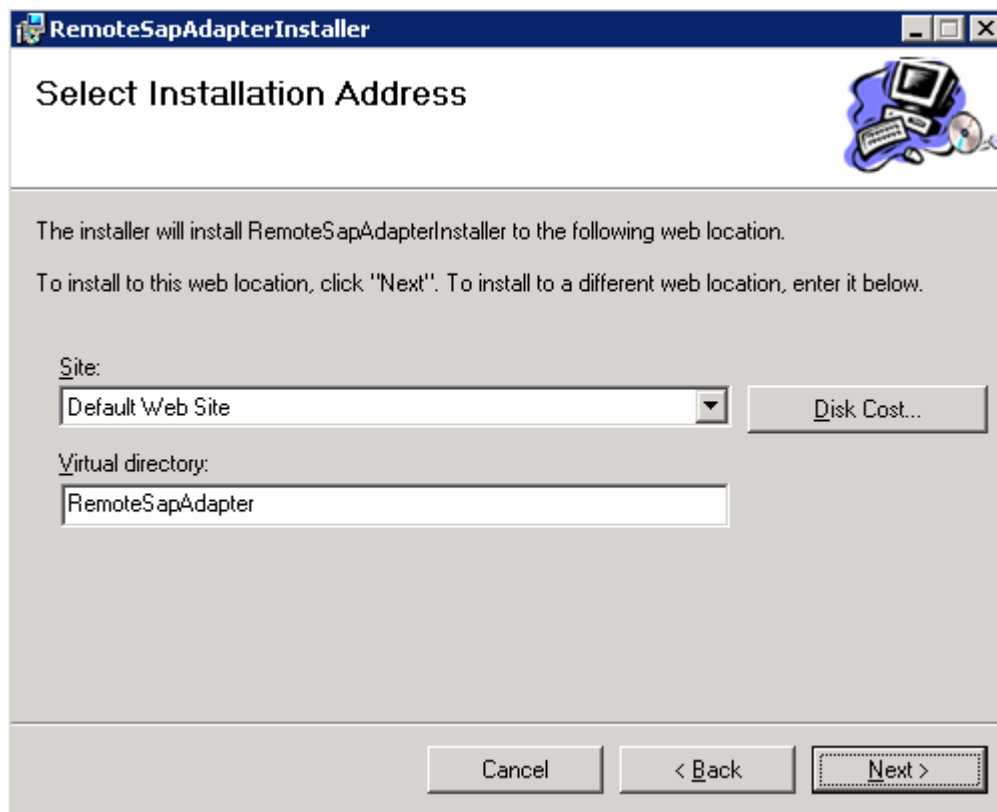


Fig.1 - Installer window

Step 3 – Software configuration

Adapter configuration

After installing, adapter needs following configuration:

1. Control Panel -> Administrative tools -> Component Services.
2. Click on Component Services -> Computers -> My Computer -> COM+ Applications.
3. Right click on SapAdapter then chose Properties.

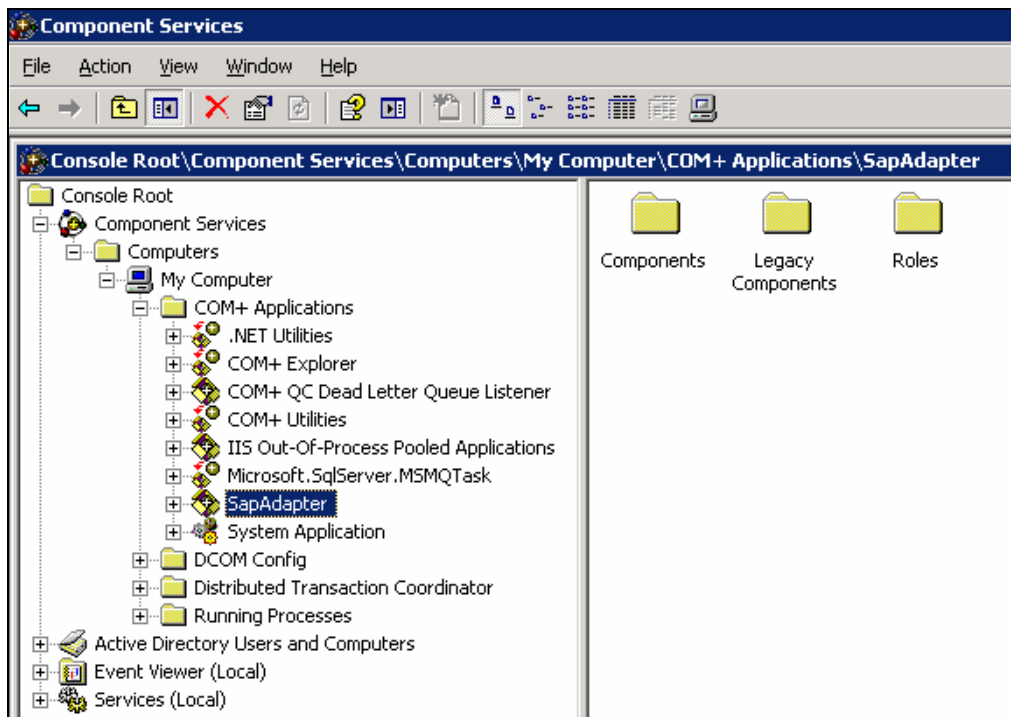


Fig. 2 Components services window

4. In Identity tab enter login and password for local user from Administrators group

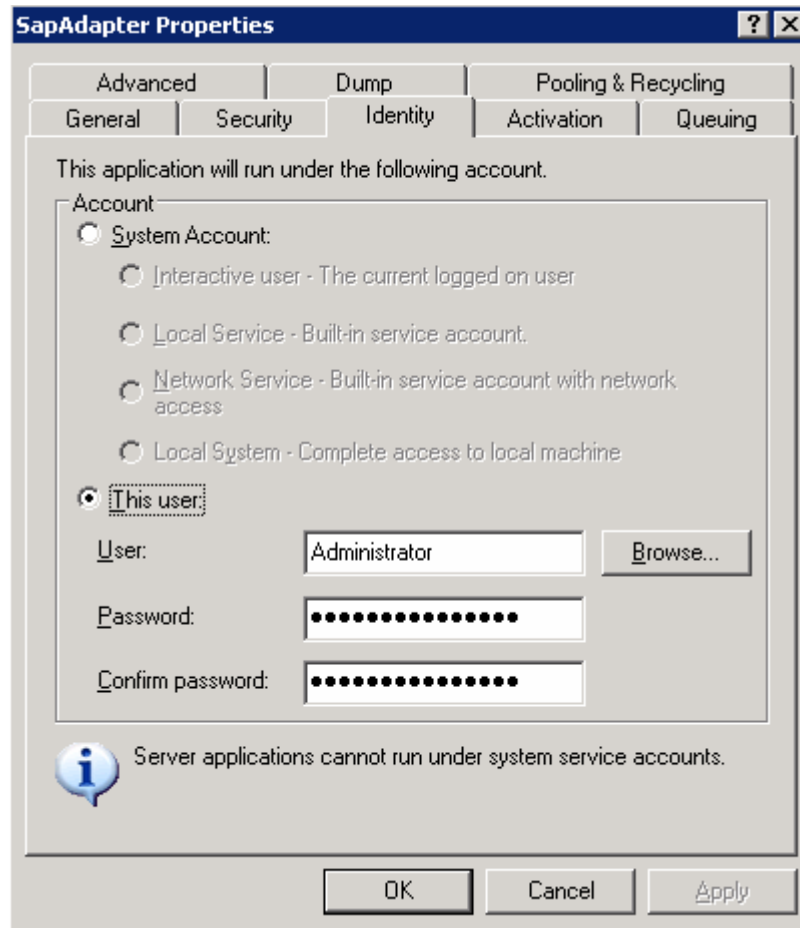


Fig. 3 SapAdapter COM+ application properties window

5. In Advanced tab, option “Leave running when idle” should be checked.

The next step can be omitted when there is possibility to connect to SAP Business One from the SAP Client (from the computer where the adapter is installed).

Firewall configuration

In case of using firewall software, following programs should not be blocked:

- SAP Business One.exe
- B1License.exe
- SqlSrvr.exe

Following ports should not be blocked:

- SAP license server port – default is 30000.
- SQL server port – default is 1433.
- Additionally, „File and Printer Sharing” should not be blocked.

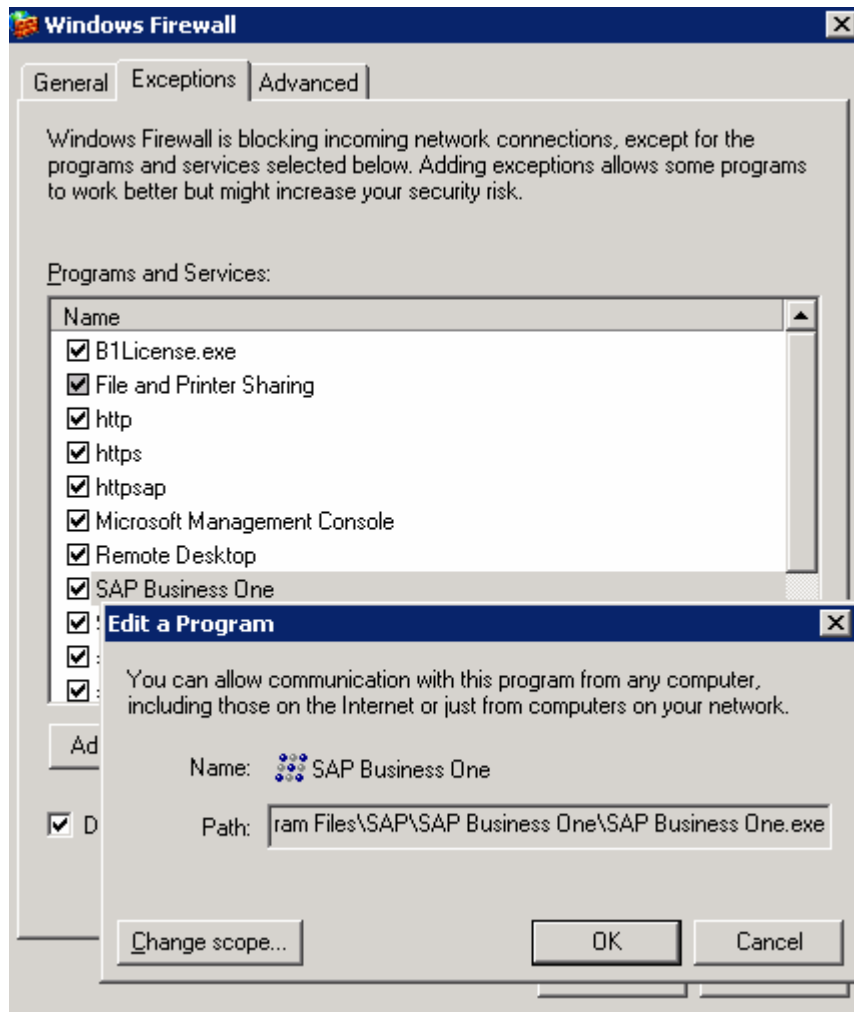


Fig. 4 Sample MS Windows Firewall configuration window

Step 4 – Testing adapter installation

To check if adapter installation is proper, enter following address in web browser:

<http://IP/APP/Adapter.asmx>

where:

IP – external IP address of computer with adapter installed

APP – virtual directory name (default: “RemoteSapAdapter”), or new name entered in Step 2.

Web browser should display page ‘Adapter Web Service’ (Fig.5).

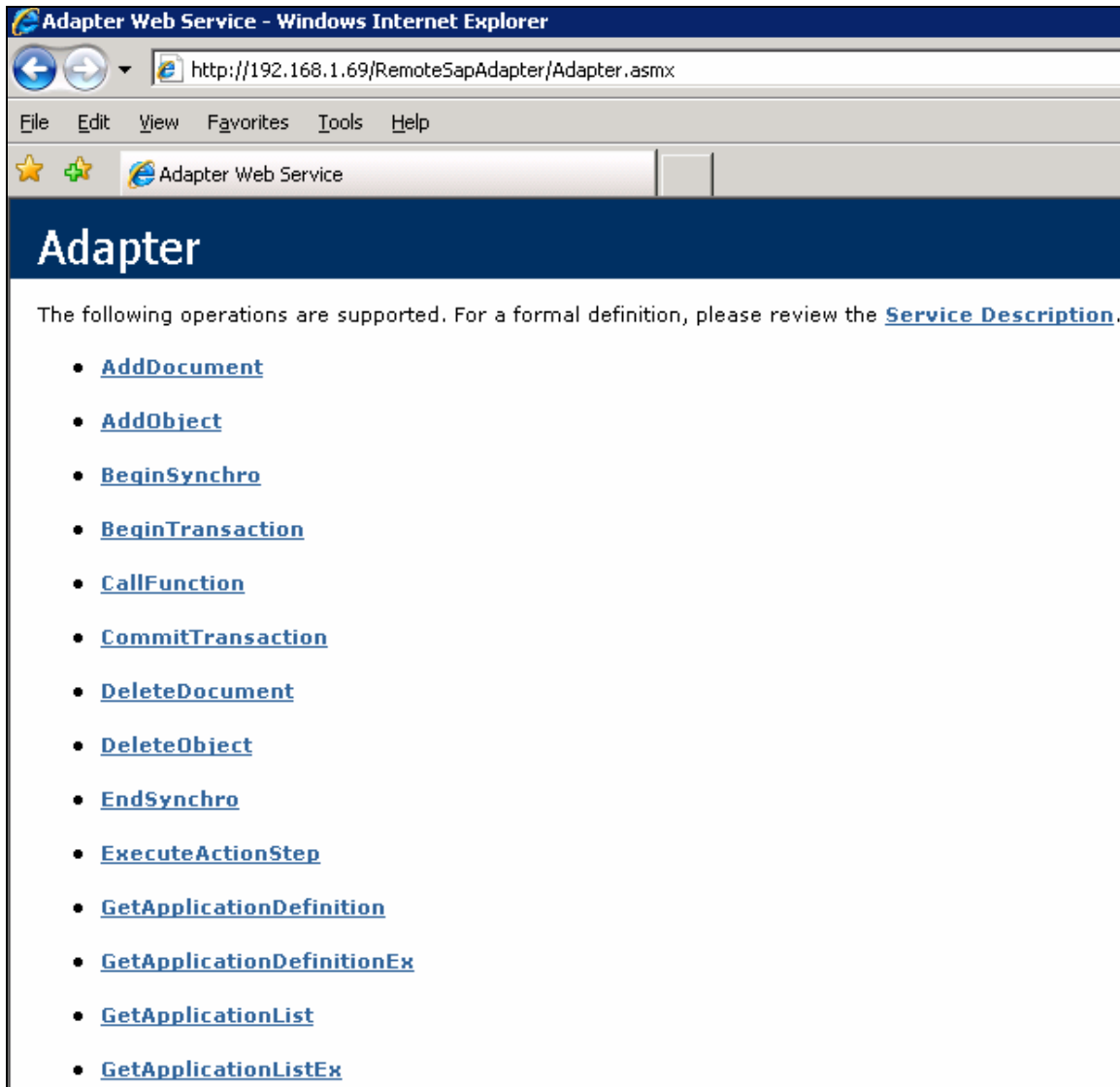


Fig. 5 Web page generated by adapter

Web page above should be visible on computer with adapter installed and on computers connected to the internet.

Additionally, on computer with adapter installed, adapter methods should be checked by clicking "SelfDescribe" link (on web page above). Page like this on Fig. 6 should be shown as a result.

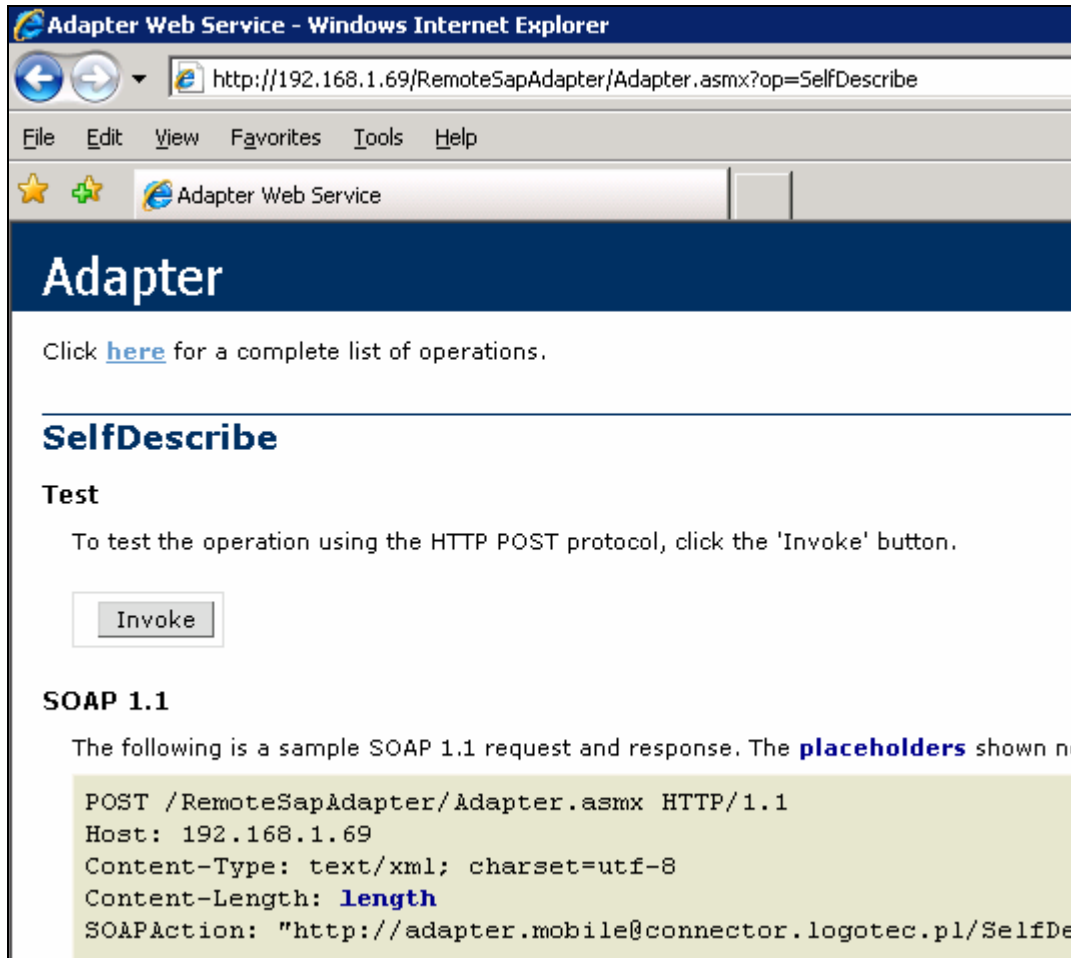


Fig. 6 "Self describe" web page generated by adapter

Click „Invoke” button and if following page will be shown, adapter is installed properly

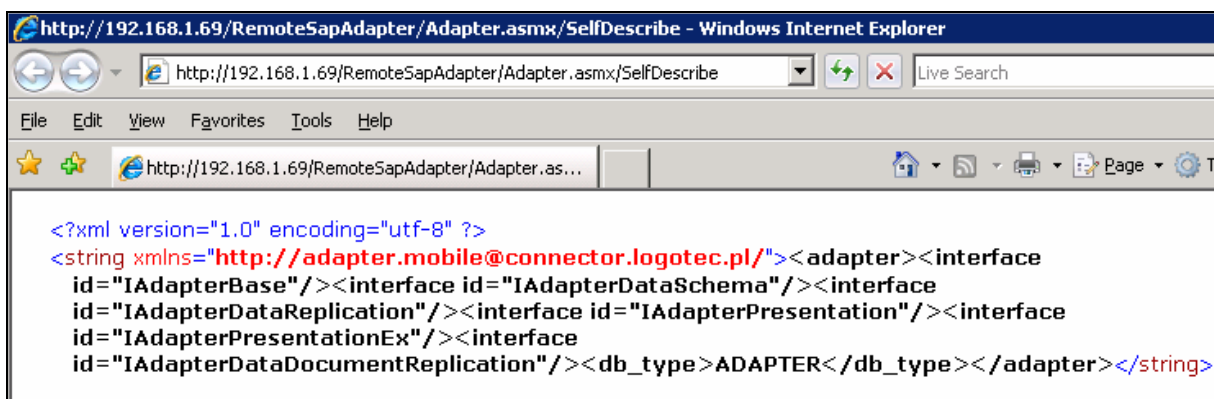


Fig. 7 Web page generated by adapter